

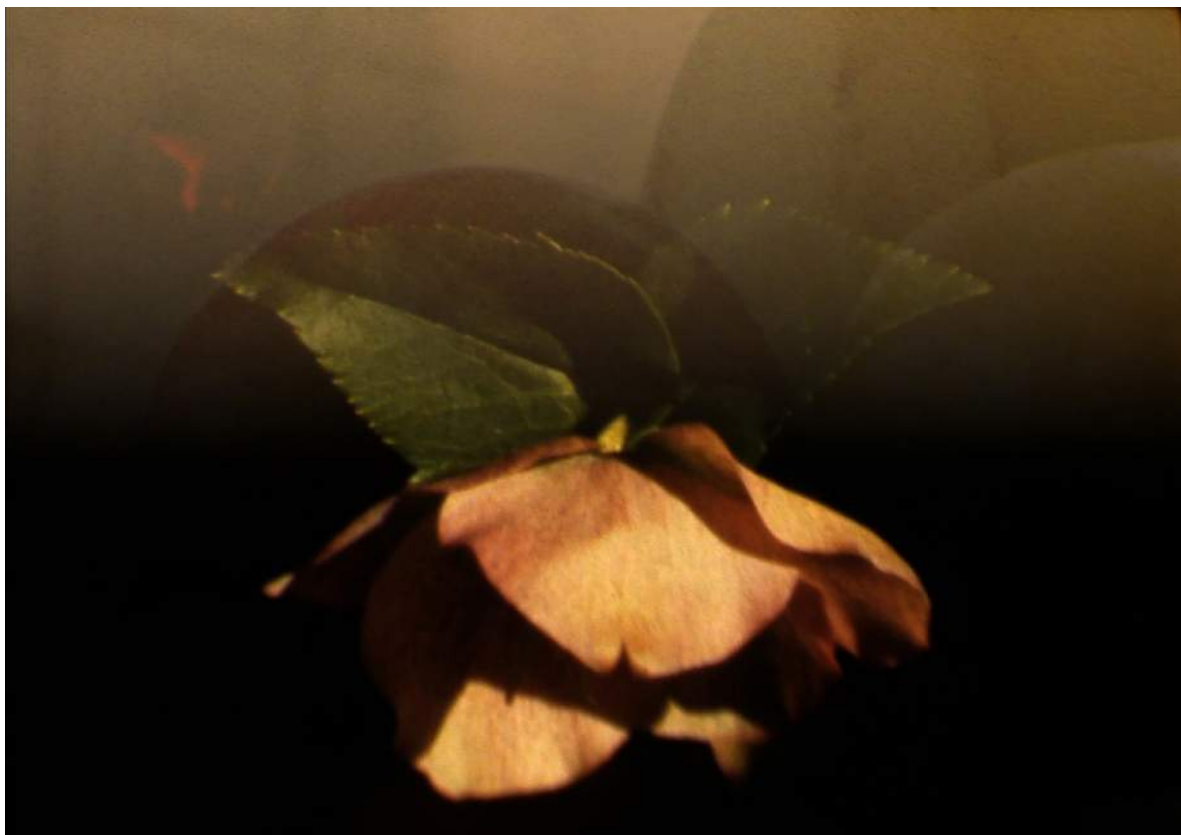
SCREENING / INSTALLATION PROGRAMME FOR HIRE

Six Artists respond to the poetry of Joanna Margaret Paul

Sonya Lacey, Popular Productions, Miranda Parkes

Rachel Shearer, Nova Paul and Shannon Te Ao

Curated by Solomon Nagler (CAN) and Mark Williams (NZ)



Nova Paul, *Still light*, 2015.

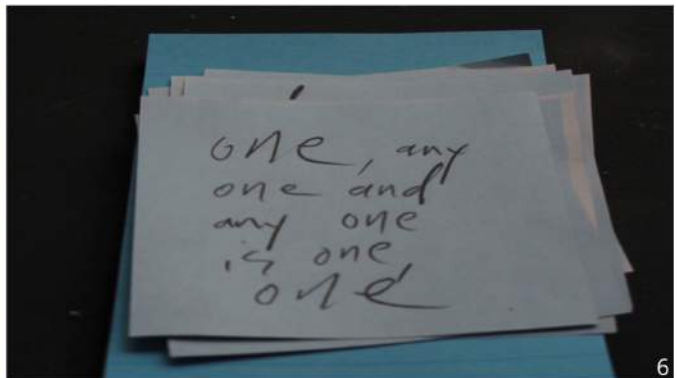
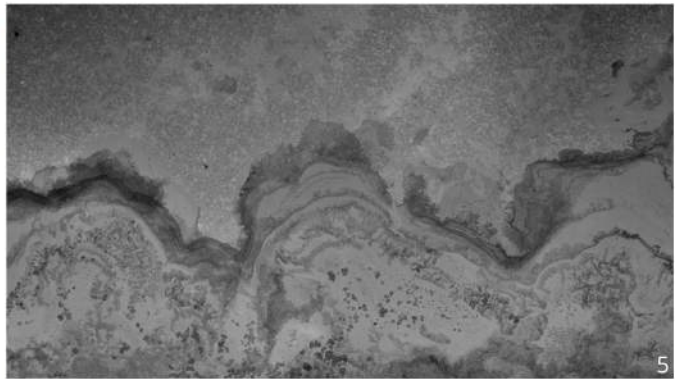
Brief Description

Six Artists respond to the poetry of Joanna Margaret Paul is a programme of short moving image works by Nova Paul, Rachel Shearer, Sonya Lacey, Miranda Parkes, Shannon Te Ao and the collective Popular Productions. A prolific film-maker, poet, photographer and painter, the work of Joanna Margaret Paul (1955-2003) quietly observed the intimate poetics of the domestic and the modest grace of her bucolic surroundings. This programme presents an ambitious range of new moving image commissions shot at home, in industrial space, nature and using a microscope within salt letter form. Inspired by a selection of Paul's poetry each film celebrates the resonance of Paul's work and offering the catalyst for a collection of new works by a range of contemporary New Zealand artists. The programme is curated by CIRCUIT Director Mark Williams and Canadian film-maker and academic Solomon Nagler.

Elements

- Screening: 1 x HD video file
- Installation: 6 x HD video files to be played on multiple monitors/projection
- Curator's wall text (exhibition) / programme notes (screening)
- Artist Biographies
- Publicity Images
- Exhibition labels
- 1500 word Curator's text for publication / hand out

Images



1. Rachel Shearer, *I am an open window*, 2015.

2. Miranda Parkes, *Sky*, 2015.

3. Nova Paul, *Still light*, 2015.

4. Shannon Te Ao, *Untitled (epilogue)*, 2015.

5. Sonya Lacey, *By Sea*, 2015.

6. Popular Productions, *third revision*, 2015.

Installation Fee

Price on application

Availability

Available now

Special Requirements

Exhibition space needs to provide lighting and sound appropriate for moving image.

Size for freighting

USB stick – all digital materials

Public Programme materials

Through a different lens – film work by Joanna Margaret Paul. A screening or exhibition programme curated by Peter Todd (UK). 45-60 minutes, HD video.

Touring Institution

CIRCUIT Artist Film and Video Aotearoa New Zealand

Contact

Mark Williams

Director

CIRCUIT Artist Film and Video Aotearoa New Zealand

director@circuit.org.nz